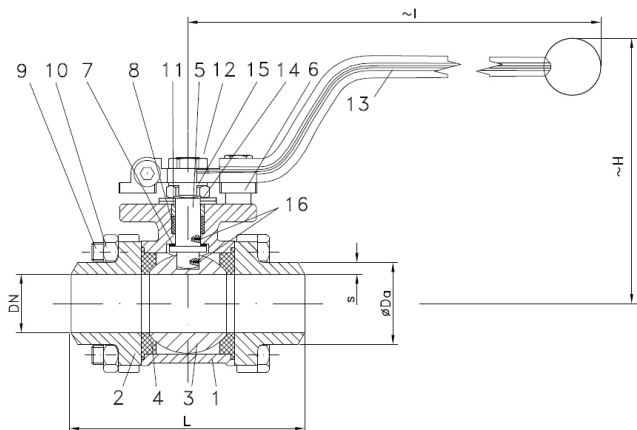


# BALL VALVE RK-PROBALL

## Type KH 3T S (NC)



### 1/4" - 4", PN63/100 casting lever



Ball valves RK-Proball KH 3T all sizes are also available with pneumatical, electrical or hydraulic actuators.

Part Name	Material	Material
1 body	1.0619	1.4408
2 cap	1.0619	1.4408
3 ball		1.4408
4 seat		KFG
5 stem		1.4401
6 stop pin		1.4301
7 washer		KFG
8 stem		KF
9 hex. schrew		A2-70
10 hex. nut		A2-70
11 thrust washer		1.4301
12 hex. nut		A2-70
13 lever		1.4301
14 plate spring		1.4310
15 locking plate		1.4301
16 antistatic element		1.4401

Ball valve with butt weld ends full bore  
face to face acc. to DIN 3202-S13  
butt weld ends acc. to EN 12627

#### Specification

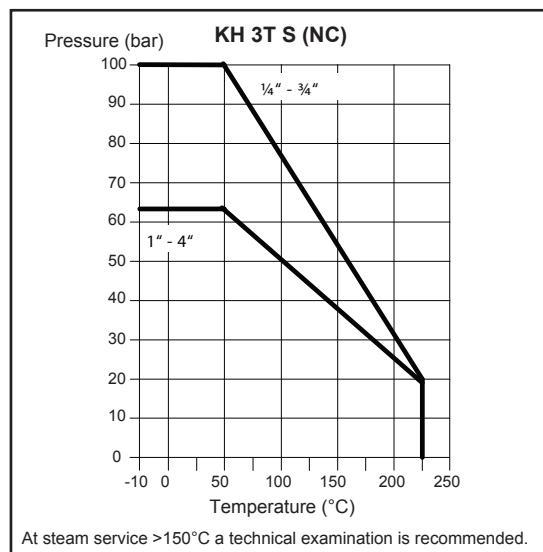
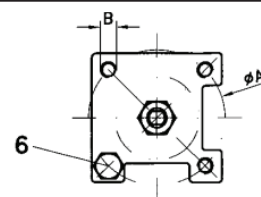
Three-piece ball valve, butt weld ends acc. to EN 12627, face to face dimensions acc. to DIN 3202-S13, full bore, blow-out-proof stem, body material stainless steel (1.4408) or steel (1.0619), antistatic device, free of non ferrous metals, seat KFG, stem packing KF, disc spring loaded adjustable, top flange DIN EN ISO 5211, approved by PED, certified acc. to GERMAN clean air act VDI 2440, with lever.

Marking: RK-Proball

Types: KH 3T S (NC)-1.0619

KH 3T S (NC)-1.4408

#### Top flange



#### Ordering example:

KH 3T S (NC), 2", PN 63, 1.4408,

#### Dimensions

DN mm	DN inch	PN	dimensions (mm)					top flange ISO 5211		Kv-value m³/h	torque Nm	weight kg	
			Ø Da	S	H	I	L	Ø A	B				
8	1/4	100	13.7	2.60	72	154	70	F03	36	M5	6	3	0.5
10	3/8	100	17.2	3.35	72	154	70	F03	36	M5	7	3	0.5
15	1/2	100	21.3	2.80	86	169	75	F04	42	M5	10	5	0.7
20	3/4	100	26.9	2.95	93	169	90	F04	42	M5	25	10	0.9
25	1	63	33.7	3.45	105	222	100	F05	50	M6	35	11	1.3
32	1 ¼	63	42.4	5.20	110	222	110	F05	50	M6	46	20	1.9
38	1 ½	63	48.3	5.15	124	222	125	F05	50	M6	80	26	2.9
49	2	63	60.3	5.65	146	304	150	F07	70	M8	110	30	4.7
65	2 ½	63	76.1	5.55	170	304	190	F07	70	M8	310	70	9.7
80	3	63	88.9	4.45	176	354	220	F10	102	M10	360	90	14.6
100	4	63	114.3	7.15	207	354	270	F10	102	M10	820	120	25.8

\*last updated 10/18